

Illinois, here we come...



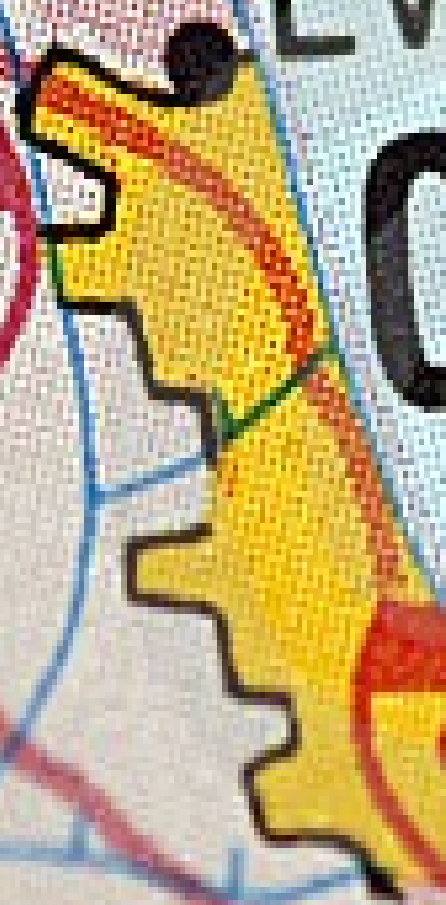
ILLINOIS

• Highland Park : H

His •

Evanston St. Jos

CHICAGO



• Gary

Chicago presentation

Country : United States

Flag

State: Illinois

Type of location : City

Mayor : Rahm Emanuel

Population : approximately 2 700 000 residents



Cloud Gate Sculpture, Chicago



Artist : Anish Kapoor Date : 2006 Type : sculpture Height : 10 meters



Millennium park



Loop



Navy Pier

Location 600 E.
Grand Avenue Chicago,
Illinois, 60611

Coordinates $41^{\circ}53'29''\text{N}$
 $87^{\circ}35'59''\text{W}$

Built 1916

Architect Charles S. Frost
E.C. Shankland



Lake Michigan

Architecture of Chicago



Chanteloup Vaéa
Sarah Arsac

Contents :

I- History :

- 1) the fire of 1871
- 2) the new generation



III- Important buildings :

- 1) school
- 2) leisure



II- Another style :

- 1) domestic architecture
- 2) current projects



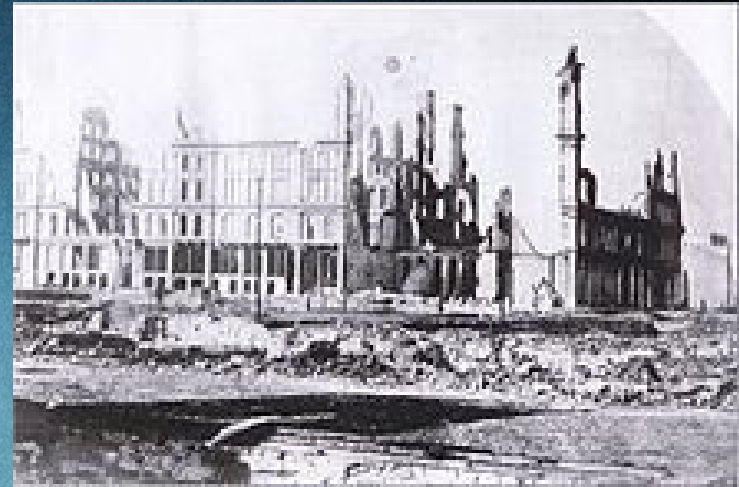
Chanteloup Vaéa
Sarah Arsac

I- History :

1) the fire of 1871

Destroys :

- shops
- offices
- Chicago city hall
- the opera
- theaters
- Church
- printing offices



Photography of the big Pacific Hotel, totally ravaged by the fire.

I- History :

2) the new generation



Aon Center
(343 meters)



Chanteloup Vaéa
Sarah Arsac



John Hancock
Center (343 meters)



Trump International
and hotel tower (423
meters)



II- Another style :

1) domestic architecture



Rowhouses

Building of the gold
coast historic district



Wheeler-kohn
House by
Ostis L.
Wheelock



II- Another style :

2) current projects



→ Old Chicago Main
Post Office
Redevelopment



↓
Chicago spire

III- Important buildings :

1) style



→ pavillon jay pritzker
(déconstructivisme)



→ NBC tower
(art deco)



Aquarium John
G. Shedd



→ Tribune tower
(neo-gothique)

Chanteloup Vaéa
Sarah Arsac

2) leisure

Chicago cultural
center



→ Chicago
theatre

A low-angle, upward-looking photograph of several skyscrapers against a clear blue sky. The central building is the tallest and most prominent, with a dark facade and a pointed top. Other buildings of varying heights and architectural styles surround it, creating a sense of height and urban density. A street lamp is visible on the right side of the frame.

The Skydeck

By Lisa Barday and Léa Boulay

Summary

- The Skydeck, night view and
- The view in the Skydeck
- The skydeck day view
- The view in the skydeck by night

The Skydeck : night view

- situated in the 103rd floor of Willis Tower
- observation post
- shelters 4 cabins glazed
- Suspended in the space, in 412 meters of the ground
- four transparent rectangles emerge from the building
- cabin can support 4,5 tons.

The view on the Skydeck

- access to Skydeck is situated in the South of the ship
- on Jackson Boulevard
- security check, including a detector of metal
- elevators travel meters in sixty seconds, at the speed of 36 km/h.

The skydeck day view

- the most symbolic skyscraper
- look Lake Michigan and plains of the Illinois, Wisconsin in clear weather
- experiment the movements of the building by big winds.

• The view in the skydeck by night

- diverse information on the panorama
- a small exhibition returns on the cultural, historic, architectural, musical or sports icons of the city.



Millenium park Sources

- Summary's image:
http://fr.smartdestinations.com/chicago-attractions-and-tours/sears-tower-skydeck/_ptattr_Chi_Att_Sears_Tower_Skydeck.html
- Second image : <http://www.chicago-voyage.com/skydeck-chicago.html>
- Third image : <http://peardaily.com/tag/skydeck>
- Fourth image : <http://www.citypass.com/chicago/skydeck-chicago>
- Fifth image : https://fr.wikipedia.org/wiki/Willis_Tower
- Sixth image :
https://www.tripadvisor.fr/LocationPhotoDirectLink-g35805-d103238-i208747241-Skydeck_Chicago_Willis_Tower-Chicago_Illinois.html
- Seventh image : <https://www.flickr.com/photos/vexxed82/14516468552>

By Emma Benramdane and Lola Vichi

NICK ULIVIERI
PHOTOGRAPHY

Millenium park

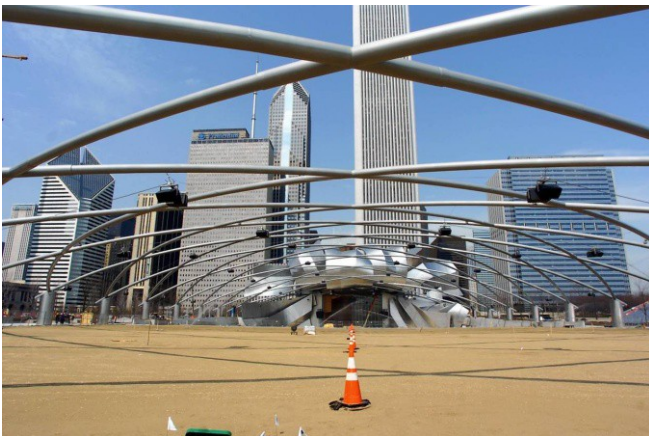


By Emma Benramdane and Lola Vichi

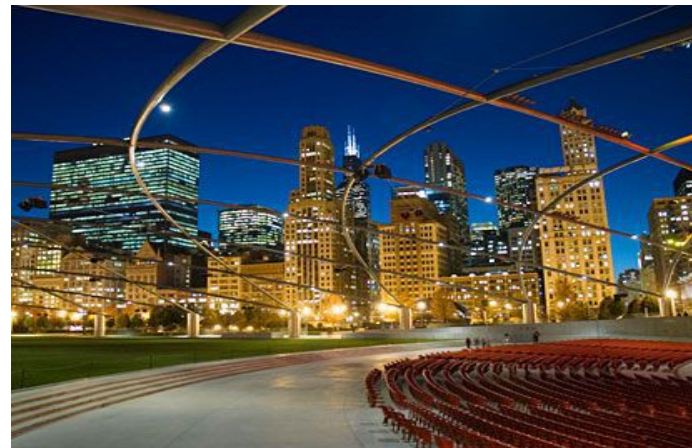
Table of content

- I. The context and History of the park
- II. Adjustments
- III. Cloud Gate
- IV. Crown Fountain

I. The context and History of the park



Before

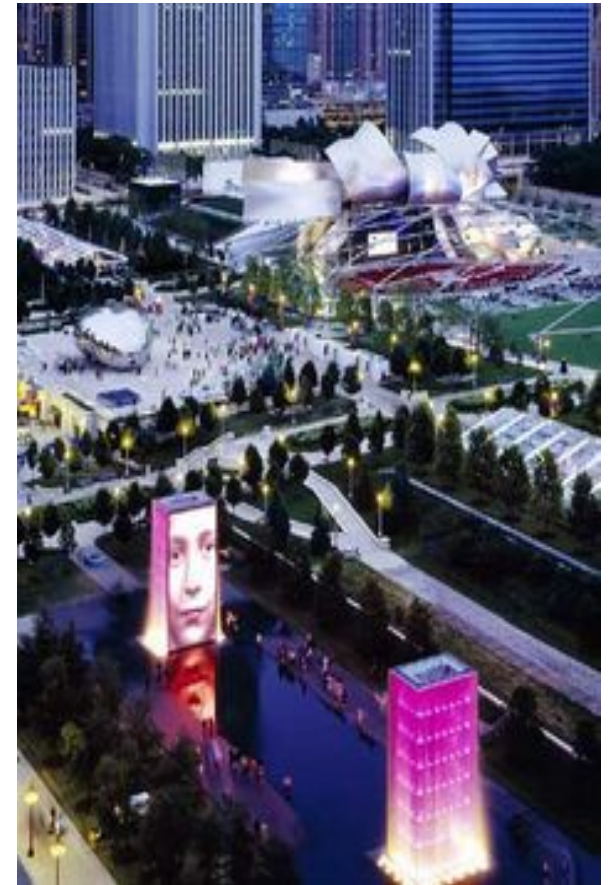


After

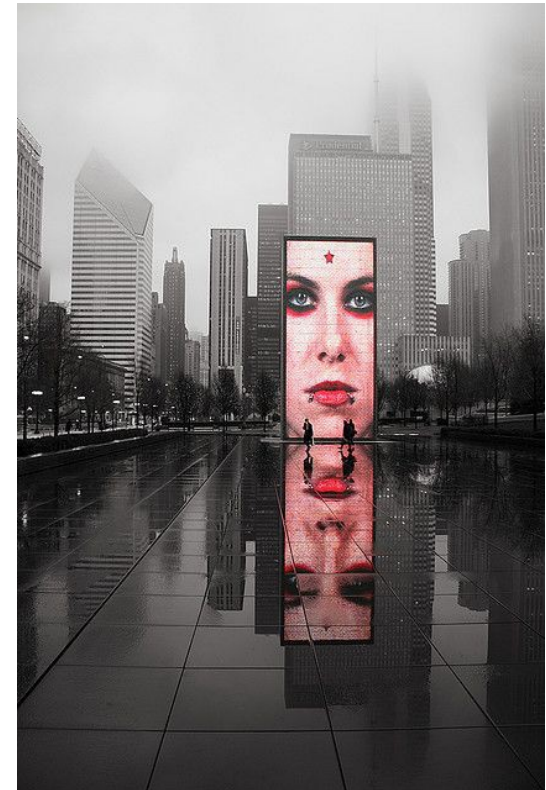
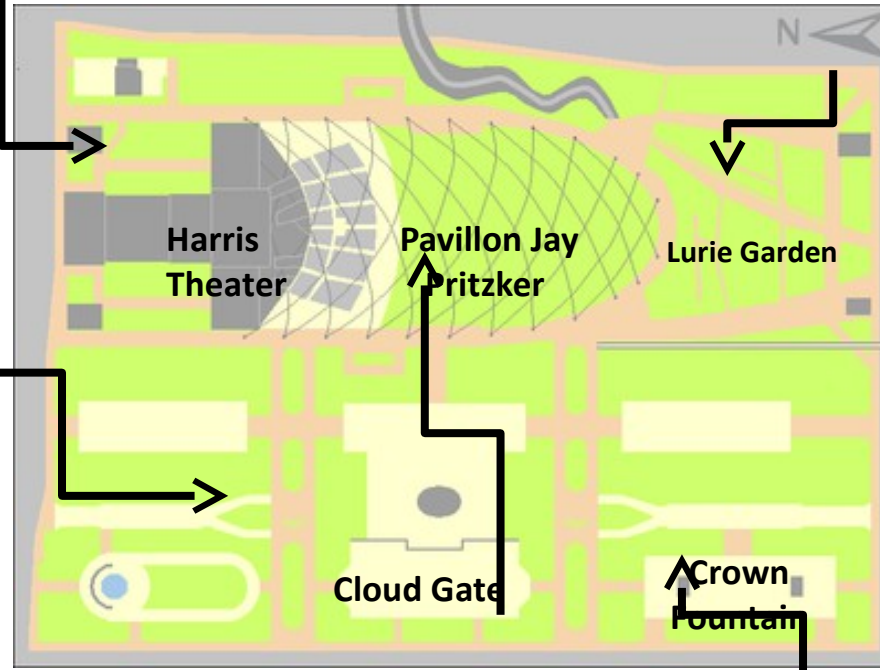
II. Adjustments



Ice Rink it became the first attraction in Millennium Park to open



II. Adjustments



III. Cloud Gate



The AT&T Plaza is a public space that hosts the Cloud gate sculpture



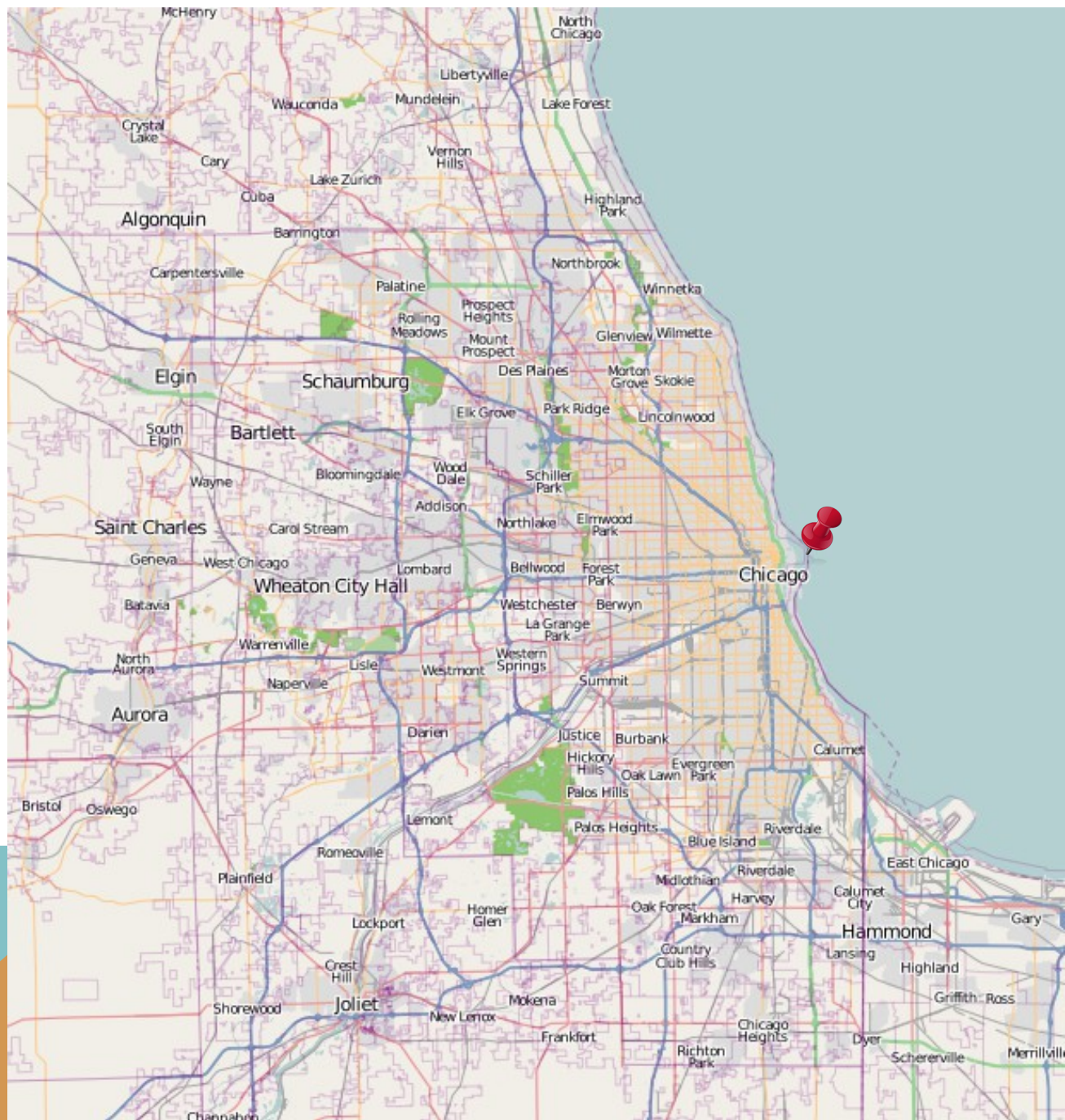
IV. Crown fountain



The Crown Fountain is an interactive work of public art and video sculpture, named in honor of Chicago's Crown family and opened in July 2004.

NAVY PIER

Léa giry & Marine poyet





During construction, 1915.



*Aircraft carrier of training and US WOLVERINE
moored to the left of Navy Pier during the Second
World War.*



Chicago River



SUMMARY

→ History

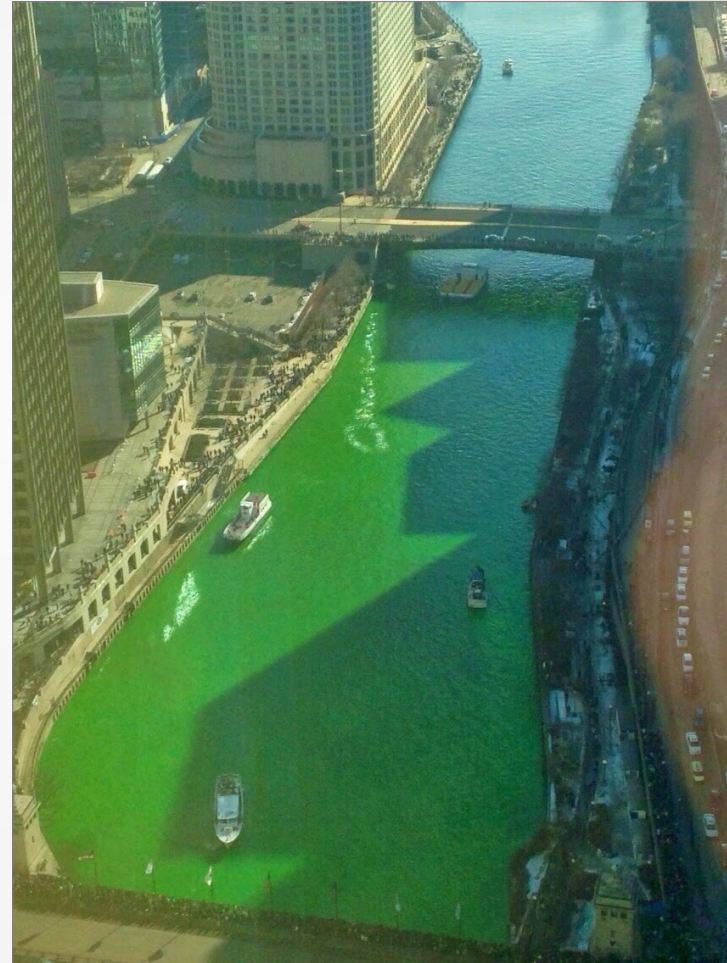
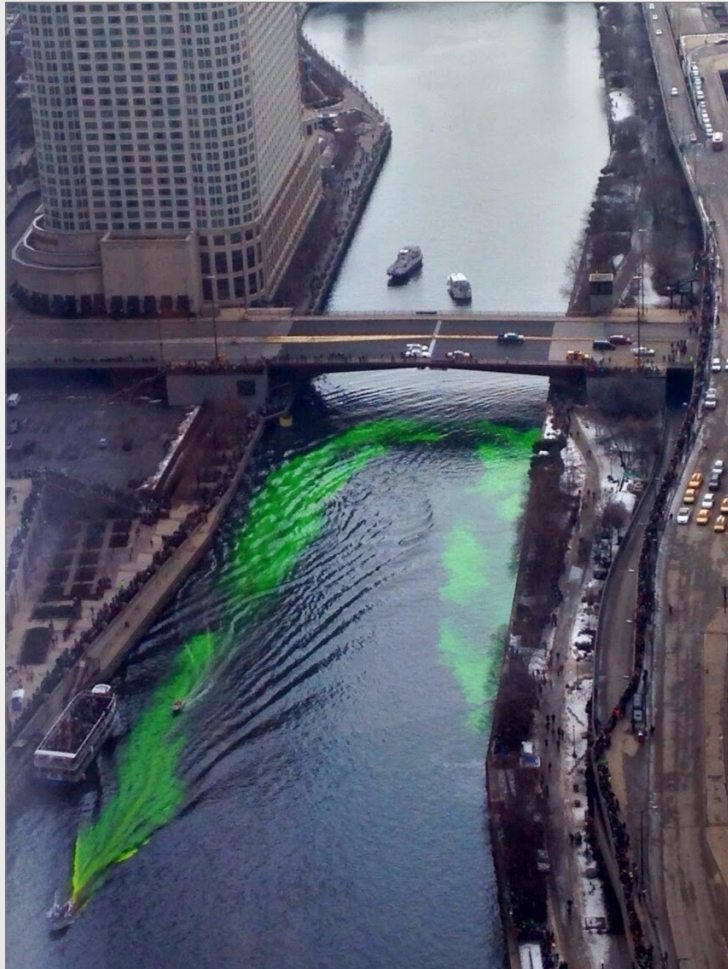
→ Today



History



Saint Patrick



Today

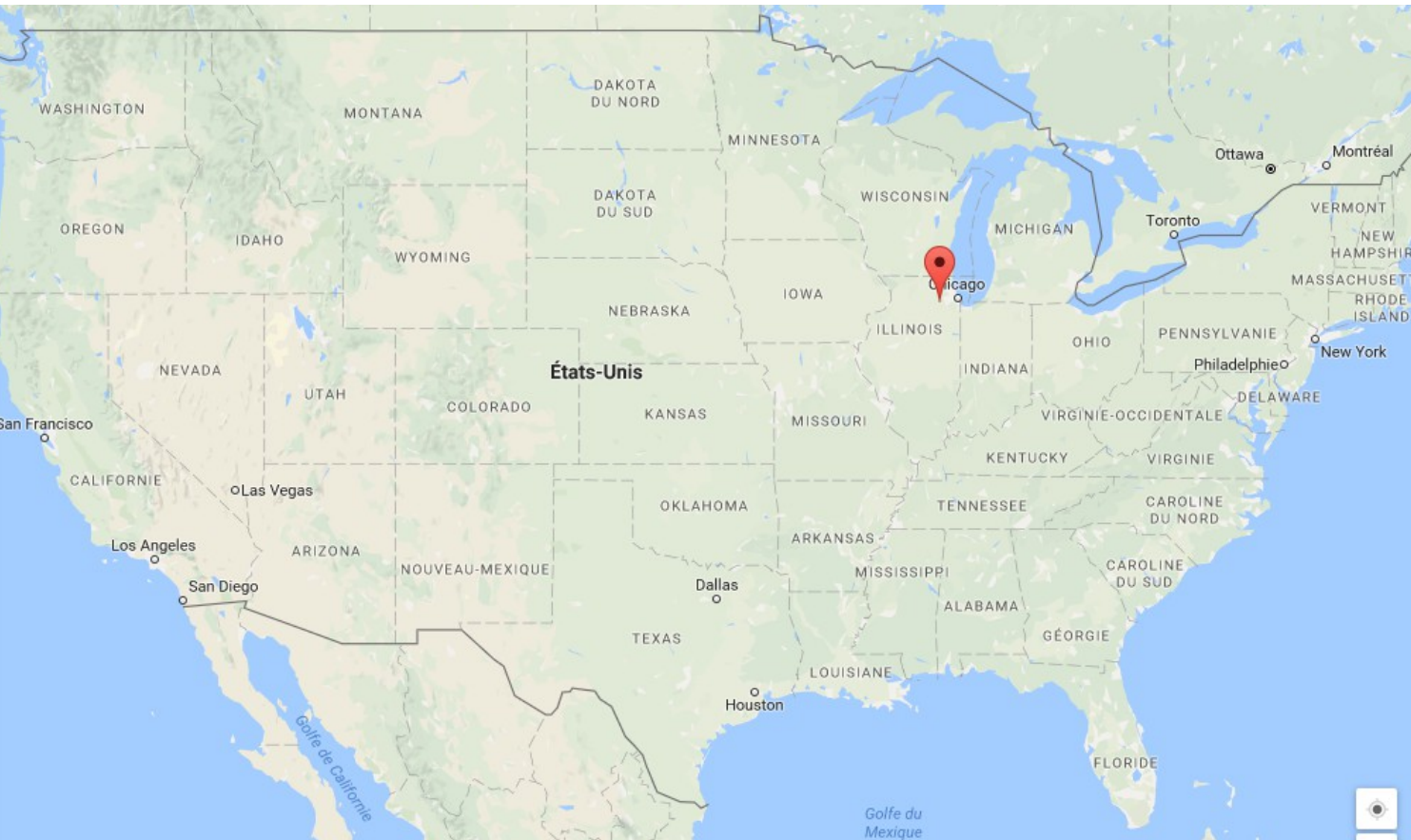


Aurora



Illinois

Dechandon Elise
Ribault- -Marques Maeva

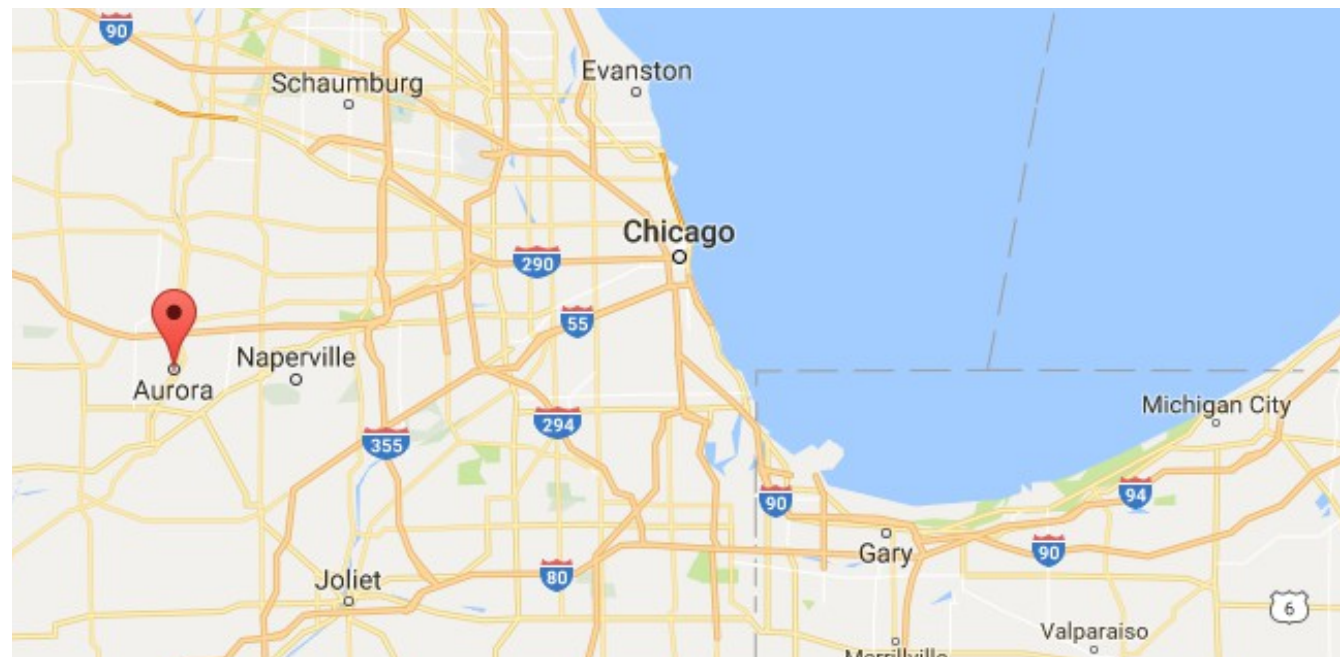


Localisation: state of Illinois, Midwest region of USA.

From Chicago to Aurora = 42 mi (66 km) = 50 to 60 minutes by car.

There are 3 regions with all in all 10 districts in Aurora.
The regions are :

- West Side
- East Side
- Far East Side/Fox Valley



West Aurora High School



Creation: 1834 by Joseph McCarty
Localisation: Stolp Island (today Aurora's downtown) near the Fox River
1837 → city's name: Aurora
1881 → nickname « City of Lights » because first town in USA to use electric lights for publicly lighting the entire City.



Second largest town of Illinois after Chicago for her number of inhabitants, around 200 000.

School type: Public high school (4 year) + part of West Aurora Public School District 129

Principal: Charles Hiscock

Number of teachers: 196

Average class size: 23.3 students

3 900 students

Grades 9 to 12 (3°-Term)

Mascot: Black Hawk

Opened: 1868

Opened: September 1931.

Building's style: Art Deco + Venetian elements

Localisation: Stolp Island Historic District

Inside we can see films, plays, musicals, concerts, comedy shows, etc.



First building outside from Chicago with air conditioned.

Capacity: 1 885 people

Paramount Theater



Outdoor center with more 140
stores

Localisation: 40 minutes from
downtown Chicago

Opening hours:

- Monday to Saturday 10am - 9pm
- Sunday 10am - 7pm



Amenities: skating pond, art
installations, play area, water
attraction

More than a shopping center →
destination for shoppers and
tourists of Chicago area.